



Umbriano[®] Slab

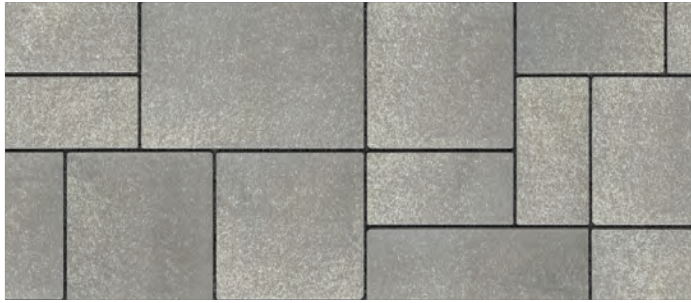
1-800-UNILOCK | UNILOCK.COM

UNILOCK[®]
PAVERS & WALLS

UMBRIANO® SLAB

NEW FOR 2020

ENDURACOLOR™



FRENCH GREY



MIDNIGHT SKY



SUMMER WHEAT

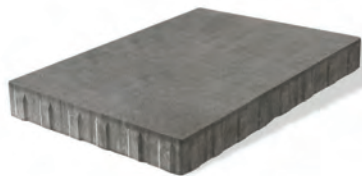


WINTER MARVEL

PRODUCT ATTRIBUTES

Visual Appearance	Granite-like surface appearance.
Finish	Subtly mottled colour. finish. Factory sealed to provide integral surface protection from stains.

PRODUCT SPECIFICATIONS



21 x 35 x 2 3/8"
540 x 890 x 60mm
NEW

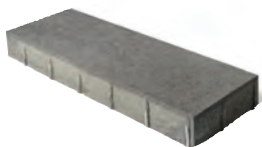
EDGE DETAILS



ROUNDED EDGE
60mm, 100mm



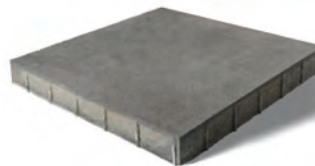
ZERO BEVEL EDGE
70mm & 80mm



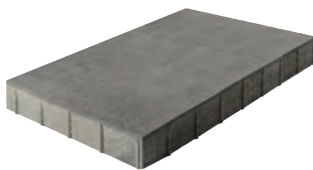
8 x 24 x 2 3/4"
200 x 600 x 70mm



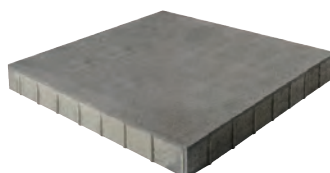
12 x 24 x 2 3/4"
300 x 600 x 70mm



24 x 24 x 2 3/4"
600 x 600 x 70mm



18 x 36 x 4"
450 x 900 x 100mm



36 x 36 x 4"
900 x 900 x 100mm

RECOMMENDED SAND



Gator G2 MAXX Sand

- | Setting time - 15 mins
- | Sets above 32° F/ 0° C
- | Can be applied if rain is expected (min. 1 hr)
- | Dust free and haze free
- | Requires only one watering
- | Four colours: Beige, Grey, Black and Ivory

Coverage:

Colour	Narrow Joints	Wide Joints
Beige, Grey, Ivory 50lb. bag	65-85 sqft	22-42 sqft
Black 50lb. bag	58-76 sqft	20-38 sqft

RECOMMENDED SEALER



Gator Hybrid Low Gloss + Colour Enhancer

- | Water-based
- | Low gloss finish
- | Vibrant Colour Enhancer
- | Rain safe after 24 hours

Coverage:

Size	Area
3.78 L / 1 U.S. gal.	200 sqft
18.9 L. / 5.28 U.S. gal.	1000 sqft

TECHNICAL INFORMATION

ASTM C936 Standard Specifications for Solid Concrete Interlocking Paving Units

Conforms to:

- C140 for Absorption 5% avg - 7% max
- Compressive Strength > 7,200 PSI avg.
- C67 for Freeze-thaw Durability
- C418 for Abrasion Durability
- Dimensional Accuracy **+/- 3 mm**

Test results available upon request

Meets the U.S. Architectural & Transportation Barrier Compliance Board Slip-Resistance Surfaces Advisory Guidelines

TECHNICAL ADVANTAGES

ENDURACOLOR™

Refined surface and long-lasting colour

EASYSKID™

Factory sealed to provide integral surface protection from stains

COLORFUSION™

Subtly mottled colour finish

DRIVE FRIENDLY

Can handle vehicular loads

PRODUCT DATA

Stones & Bundling	Unit Thickness	SqFt Per				Per Bundle		Soldier LnFt Per			Sailor LnFt per			Units Per			Lbs Per		
		Bundle	Layer	Section	Stone	Layers	Sections	Unit	Section	Bundle	Unit	Section	Bundle	SqFt	Layer	Bundle	Layer	Section	Bundle
Georgetown Manufacturing																			
21 x 35 x 2 3/8"	2 3/8" (60mm)	62.76	10.46	-	-	6	-	1.772	-	21.26	2.953	-	35.43	0.19	2	12	287	-	1,722
8 x 24 x 2 3/4"	2 3/4" (70mm)	82.67	10.33	-	1,292	8	-	1.969	-	42.0	0.656	-	126.0	0.77	-	64	331	-	2,647
12 x 24 x 2 3/4"	2 3/4" (70mm)	93.00	11.63	-	1,938	8	-	1.969	-	47.2	0.984	-	94.5	0.52	-	48	393	-	3,142
24 x 24 x 2 3/4"	2 3/4" (70mm)	62.00	7.75	-	3,875	8	-	1.969	-	31.5	1.969	-	31.5	0.26	-	16	258	-	2,062
36 x 36 x 4"	4" (100mm)	43.59	8.72	-	-	5	-	-	-	-	-	-	-	-	1	-	-	-	1,994
18 x 36 x 4"	4" (100mm)	43.59	8.72	-	-	5	-	-	-	-	-	-	-	-	2	-	-	-	1,994

Notes: 24" and 60mm Random products are not intended for vehicular applications. All measurements are nominal. **Sold in full bundles only** on a refundable skid. **Important: A urethane rubber paver mat must be used to prevent scuffing.** Contact your Unilock Territory Manager or call 1-800-UNILOCK for further information. *For custom options, please contact your Unilock Territory Manager.

APPLICATIONS



Pedestrian



Roof Deck



*Wall pairing suggestion- U-CARA® - matching colour and finish

SOLAR REFLECTIVE INDEX (SRI) TESTING DETAILS

Product	Solar Reflectance	SRI
Autumn Sunset (custom)	0.30	32
Cream (custom)	0.45	52
Summer Wheat	0.42	48
Winter Marvel	0.35	38

LEED INFORMATION

Rainwater Management: LEED V4:

- Up to three points can be achieved for retaining rainwater onsite based on the percentile kept
- 85% (zero lot line projects only) - 3 points, 95% - 2 points and 98% - 3 points. (All except Healthcare - subtract one point) See LEED v4 for more specific project/site details.

Materials and Resources: LEED V4:

Building Product Disclosure and Optimization

Sourcing of Raw Materials - Sourcing of Raw Materials and Extraction • **1 point**

Sourcing of Raw Materials - Leadership Extraction Practices • **1 point**

Material Ingredient Reporting - Material Ingredient Reporting • **1 point**

Material Ingredient Reporting - Material Ingredient Optimization • **1 point**

Environmental Product Declaration • **1 point**

*Paver Maintenance Tips:

- Equip plow scrapers and blades with shoes or high-density plastic blades to reduce the risk of damaging paver joints and the surface
- Only apply min. amount of de-icing salts necessary to melt the snow and ice. Remove excess salt after ice melts
- Regular cleaning routine should include sweeping or blowing loose debris from the pavement surface, and less frequently, deep cleaning with cleaning products and/or water
- Unilock pavers do not require sealing, however, some people choose to do so for aesthetic purposes

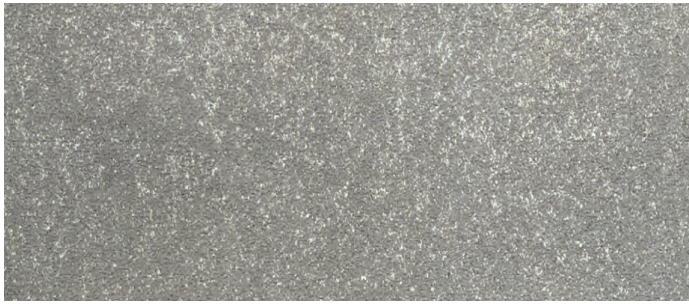
*Things to know:

Efflorescence is a naturally occurring calcium salt that can sometimes appear on the surface of concrete and clay products. Efflorescence does not affect the structural integrity of concrete, it is a purely aesthetic issue that typically disappears with no further intervention after a season of rainfall. If desired, the process can be accelerated by washing the surface with an Efflorescence Remover.

UMBRIANO® COPING

ENDURACOLOR™

NEW FOR 2020



FRENCH GREY



MIDNIGHT SKY



SUMMER WHEAT



WINTER MARVEL

PRODUCT ATTRIBUTES

Visual Appearance	Granite-like surface appearance.
Finish	Mottled surface with ColorFusion™ Technology which randomly disperses rich colour and granite particles to achieve a natural, non-slip texture. Factory sealed with EasyClean™, an integral surface protection from stains.

PRODUCT SPECIFICATIONS



CHAMFERED
14 x 24 x 2³/₈"
360 x 600 x 60mm



FULLNOSE
14 x 24 x 2³/₈"
360 x 600 x 60mm

PRODUCT DATA

Stones & Bundling	Sq. Ft. Per		Linear Feet Per		Units Per		Per Bundle		Lbs Per	
	Bundle	Layer	Bundle	Unit	Bundle	Layer	Layers	Sections	Unit	Bundle
Pickering Manufacturing										
Umbriano Coping	55.03	9.17	-	-	24	4	6	-	-	1,510

Notes: Sold in full bundles only. Contact your Unilock Territory Manager or call 1-800-UNILOCK for further information.

*For custom options, please contact your Unilock Territory Manager.

RECOMMENDED ADHESIVE



Gator Block Bond XP

- | VOC Compliant
- | Low odor- safe indoors or out
- | Fast curing- provides permanent overnight bond
- | Suitable for use in hot and cold environments
- | Non-shrinking- does not crack
- | Strong and versatile

Coverage: For 1/4" Bead (approx)

10 oz		28 oz	
m	ft.	m	ft.
-9	-31	-26	-86

*Things to know:

Handling and Installation - care must be taken to avoid tossing stones so that they bang against each other. Damage to the surface appearance can happen if handled too rough.