



# Pisa Smooth™

1-800-UNILOCK | [UNILOCK.COM](http://UNILOCK.COM)

**UNILOCK**  
PAVERS & WALLS



# PISA SMOOTH™ CLASSIC

**NEW FOR 2020**



CLIFFSIDE GREY



GRANITE BLEND



IRISH COAST



SANDY BEACH

## PRODUCT ATTRIBUTES

Visual Appearance	A sleek, linear aesthetic with clean lines and subtle edge details that blend well with both modern and traditional design.
Finish	Smooth, linear appearance.

## PRODUCT SPECIFICATIONS



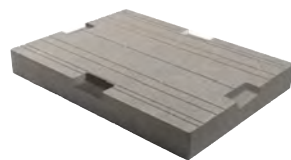
**STANDARD**  
10<sup>3</sup>/<sub>4</sub> x 21<sup>1</sup>/<sub>2</sub> x 3<sup>3</sup>/<sub>4</sub>"  
275 x 550 x 85mm



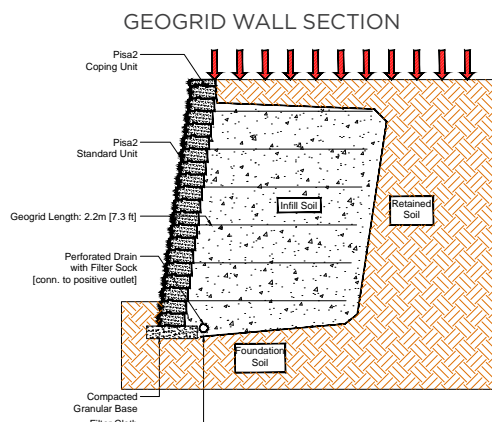
**COPING**  
13<sup>3</sup>/<sub>4</sub> x 21<sup>1</sup>/<sub>2</sub> x 3<sup>3</sup>/<sub>4</sub>"  
350 x 550 x 85mm



**CORNER**  
10<sup>3</sup>/<sub>4</sub> x 21<sup>1</sup>/<sub>2</sub> x 3<sup>3</sup>/<sub>4</sub>"  
275 x 550 x 85mm

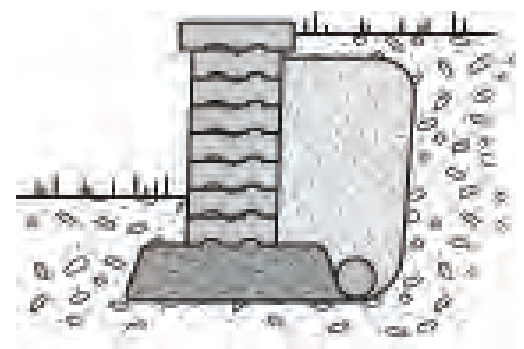


**U-GRIP™ BASE PAD**  
14 x 19 x 2"  
355 x 482 x 55mm



Cross sections are examples, and must not be used for construction.

## GRAVITY WALL SECTION



## RECOMMENDED ADHESIVE



### Gator Block Bond XP

- | VOC Compliant
- | Low odor- safe indoors or out
- | Fast curing- provides permanent overnight bond
- | Suitable for use in hot and cold environments
- | Non-shrinking- does not crack
- | Strong and versatile
- | Coverage: For 1/4" Bead (approx)

10 oz		28 oz	
m	ft.	m	ft.
-9	-31	-26	-86

## TECHNICAL INFORMATION

### ASTM C 1372 Standard Specifications for Dry-Cast Segmental Retaining Wall Units

Conforms to:

- C140 for Absorption and Compressive Strength > 3000 PSI
- C1262 for Freeze Thaw Durability <1% mass loss
- C1372 Overall dimensional variations permissible for width, height and length +/- 1/8" (+/-3 mm)

### Unilock standards exceed 5,000 PSI for Pisa® Smooth products with:

- 4% absorption avg.
- 5% absorption max.
- Dimensional Accuracy +/- 1/8" (+/-3 mm)

*Test results available upon request*

### Meets the U.S. Architectural & Transportation Barrier Compliance Board Slip-Resistance Surfaces Advisory Guidelines

## LEED INFORMATION

### Materials & Resources: LEED V4:

Building Product Disclosure and Optimization

Sourcing of Raw Materials - Sourcing of Raw Materials and Extraction • **1 point**

Sourcing of Raw Materials - Leadership Extraction Practices • **1 point**

Material Ingredient Reporting - Material Ingredient Reporting • **1 point**

Material Ingredient Reporting - Material Ingredient Optimization • **1 point**

Environmental Product Declaration • **1 point**

If required, summary test data shall be provided with the SRW Design and shall include:

a) SRW Unit shear strength as per ASTM D6916

b) SRW Unit - Geosynthetic Reinforcement connection strength as per ASTM D6638

## PRODUCT DATA

Stones & Bundling	Face Feet Per		Linear Feet Per		Units Per		Per Bundle		Lbs Per	
	Bundle	Unit	Bundle	Unit	Bundle	Face Feet	Layers	Sections	Unit	Bundle
<b>Gormley Manufacturing; U-Grip - Gormley Manufacturing</b>										
Standard	24.15	0.503	86.61	-	48	-	6	1	48.14	2,311
Corner Unit	24.15	0.503	129.92	-	48	-	6	1	60	2,880
Coping Unit	9.06	0.503	64.98	-	18	-	6	1	76.74	1,381
U-Grip Base Pad			85.39	1.581	54		9		46	2,500

Notes: Sold in full bundles or sections only. Maximum height – 36" (under optimum conditions) but can be engineered for walls that require to be higher. Higher walls can be achieved using geogrid reinforcement. Tapered units will allow for a minimum 5ft. outside radius. Automatic setback is 3/4" per row. Engineering services are available. Contact your Unilock Territory Manager or call 1-800-UNILOCK for further information.

\*For custom options, please contact your Unilock Territory Manager.

## APPLICATIONS



Garden Walls & Seat Walls



Retaining Walls



Steps

For coping options, we recommend using LedgeStone™, Natural Stone, Universal Coping or Pisa Coping.

### \*Things to know:

Handling and Installation – Product is installed using Unilock Concrete Adhesive to secure corners and all rows. Base preparation may vary according to soil and climate conditions. Maximum height is 24" including the unit in the ground (under optimum conditions). Based on 12" deep wall coverage = 21.4 sqft per bundle. Based on an 8" deep wall coverage = 32 sqft per bundle.