



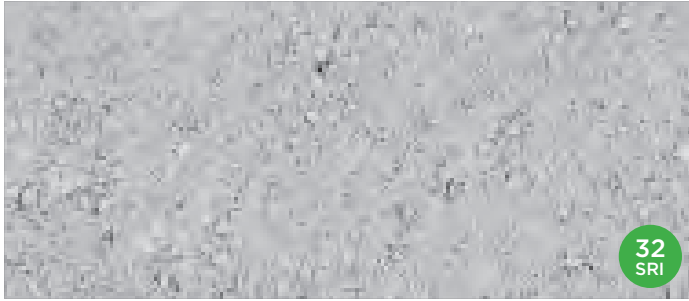
Dura-Flow™

1-800-UNILOCK | UNILOCK.COM

UNILOCK
PAVERS & WALLS

DURA-FLOW™

 PERMEABLE



NATURAL



PRODUCT ATTRIBUTES

Visual Appearance	Dura-Flow™ is specially designed permeable pavement with patented openings called 'cupules' that allow for fast cleaning of the joints using standard sweeping equipment.
Finish	This latest evolution of permeable pavement is suitable for heavy-duty applications and is ADA compliant.

PRODUCT SPECIFICATIONS



9⁷/₈ x 9⁷/₈ x 3¹/₈"
250 x 250 x 80mm

EDGE DETAILS



ROUNDED EDGE

PERMEABLE PAVEMENT DATA

Large: 3/8" to 1/2" Joint	JOINT MATERIAL	JOINT WIDTH*	VOID SPACE*	SURFACE INFILTRATION RATE**	MIN. INFILTRATION RATE FOR RAINFALL OF:			
					2" / HR	4.5" / HR	6.5" / HR	11" / HR
	ASTM #8 IDOT CA-16	12 MM	8%	912" / HR	25	56	81	138

*Joint Width is measured at the top of the paver. Void Space is calculated at the base of the paver. **Infiltration rate is based on testing done when first installed and is an approximate. Permeable spacers are available for use with extended range of Unilock products.

RECOMMENDED SAND



Gator Aqua Rock

- | For Residential & Commercial applications
- | For permeable paver joints
- | Helps prevent erosion due to climatic conditions
- | Use as bedding and jointing material
- | Graded to meet ASTM No. 9 water rate
- | Long term high infiltration performance
- | 2,200 lb Supercack available for large applications

Coverage:

Size	Area
50lb. bag	20-25 sqft
2,200 lb. Super Sack	880-1100 sqft

(Based on 60mm paver.)

TECHNICAL INFORMATION

ASTM C 936 Standard Specifications for Solid Concrete Interlocking Paving Units

Conforms to:

- C140 for Absorption 5% avg - 7% max
 - Compressive Strength > 7,200 PSI avg.
 - C67 for Freeze-thaw Durability
 - C418 for Abrasion Durability
 - Dimensional Accuracy **+/- 3 mm**
- Test results available upon request*

Meets the U.S. Architectural & Transportation Barrier Compliance Board Slip-Resistance Surfaces Advisory Guidelines

TECHNICAL ADVANTAGES



PERMEABLE

Can be installed to allow water to flow through

PRODUCT DATA

Stones & Bundling	Unit Thickness	SqFt Per				Per Bundle		Soldier LnFt Per			Sailor LnFt per			Units Per			Lbs Per		
		Bundle	Layer	Section	Stone	Layers	Sections	Unit	Section	Bundle	Unit	Section	Bundle	SqFt	Section	Bundle	Layer	Section	Bundle
Pickering Manufacturing																			
Random Bundle	3 1/8" (80 mm)	74.17	10.60		0.51	7	-	-	-	-	-	-	-	1.98	-	147	350	-	2,452

Notes: Dura-Flow™ can be manufactured in a variety of special order colors and textures Minimum quantities will apply.

Contact your Unilock Territory Manager or call 1-800-UNILOCK for further information. *For custom options, please contact your Unilock Territory Manager.

APPLICATIONS



Permeable (Heavy Duty)



Pedestrian



Residential Vehicular



Commercial Vehicular

*Paver Maintenance Tips:

- Equip plow scrapers and blades with shoes or high-density plastic blades to reduce the risk of damaging paver joints and the surface
- Only apply min. amount of de-icing salts necessary to melt the snow and ice. Remove excess salt after ice melts
- Regular cleaning routine should include sweeping or blowing loose debris from the pavement surface, and less frequently, deep cleaning with cleaning products and/or water
- Unilock pavers do not require sealing, however, some people choose to do so for aesthetic purposes

*Things to know:

Efflorescence is a naturally occurring calcium salt that can sometimes appear on the surface of concrete and clay products. Efflorescence does not affect the structural integrity of concrete, it is a purely aesthetic issue that typically disappears with no further intervention after a season of rainfall. If desired, the process can be accelerated by washing the surface with an Efflorescence Remover.

For Permeable applications- it is recommended that the jointing material be regularly maintained, including vacuuming, cleaning and reapplying to keep infiltration at its maximum potential.

SOLAR REFLECTIVE INDEX (SRI) TESTING DETAILS

Product	Solar Reflectance	SRI
Natural	0.30	32 

LEED INFORMATION

Materials & Resources: LEED V4:

Building Product Disclosure and Optimization

Sourcing of Raw Materials - Sourcing of Raw Materials and Extraction • **1 point**

Sourcing of Raw Materials - Leadership Extraction Practices • **1 point**

Material Ingredient Reporting - Material Ingredient Reporting • **1 point**

Environmental Product Declaration • **1 point**